

CRAWLER CRANE QUY180



ZOOMLION

Zoomlion Heavy Industry Science & Technology Co.,Ltd.

Add: Zoomlion Overseas Building, No.613, 3rd Section, Furong Middle Road, Yuhua District, Changsha, Hunan, P.R.China 410205

Copyright © 2016 Zoomlion. All rights reserved. Reproduction and copying of any part of the contents is not allowed for any purposes without Zoomlion's written approval.
Note: No product coating appearance shall be subject to sample.

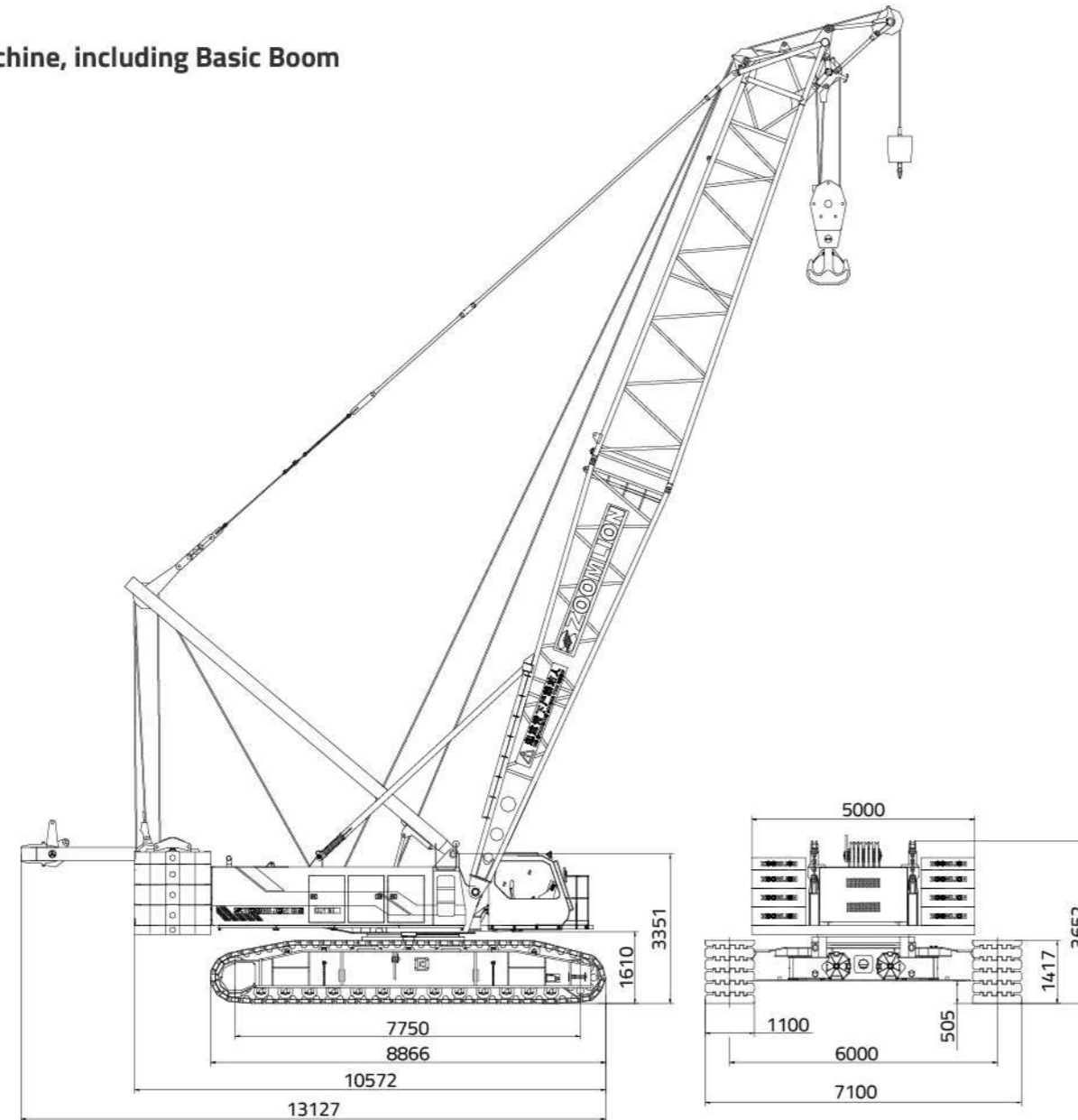


Printed in China VN-EN-MC-201604-01

ZOOMLION

Overall Dimensions and Main Parameters

1. Overall Dimensions of Basic Machine, including Basic Boom



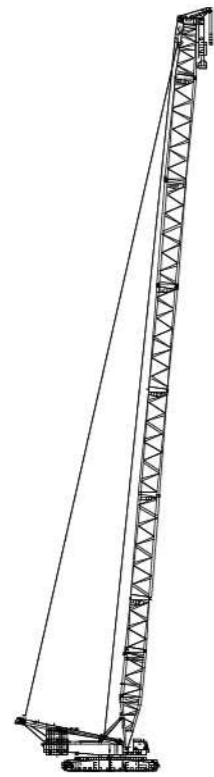
2. Main Performance Parameters

Item	Unit	Value	Remark	
Maximum lifting capacity × radius	t × m	180 × 5		
Deadweight of crane with basic boom	t	167		
Length of main boom	Heavy duty boom	m	20~83	
	Light duty boom	m	86~92	
Length of fixed jib	m	13~31		
Maximum lifting capacity with fixed jib	t	22		
Fixed jib angle	°	10,30		
Maximum length of main boom + fixed jib	m	71+31	Length of main boom 47~71	
Length of luffing jib	m	24~51		
Maximum lifting capacity with luffing jib	t	38		
Working angle of main boom in crane operation with luffing jib	°	85,75,65		
Maximum length of main boom + luffing jib	m	56+51	Length of main boom 38~56	
Single rope speed of winches	Main hoisting winch (hoisting winch 1)	m/min	110	Sixth layer of drum
	Auxiliary hoisting winch (hoisting winch 2)	m/min	110	Sixth layer of drum
	Derricking winch	m/min	30	Fifth layer of drum
Slewing speed	rpm	1.4		
Traveling speed	km/h	1.2		
Gradeability	%	30%		
Ground pressure	Mpa	0.1		
Overall dimensions L × W × H	m	10.6 × 7.1 × 3.65	Without A-frame and boom frame	
Engine	Rated power/rotational speed	kW/rpm	227/2000	QSL9-C305
	Maximum output torque/rotational speed	Nm/rpm	1505/1400	
	Exhaust emission standard			U.S.EPA Tier 3 and EU Stage III
Distance between track centers × crawler contact length × crawler shoe width	mm	6000 × 7750 × 1100		

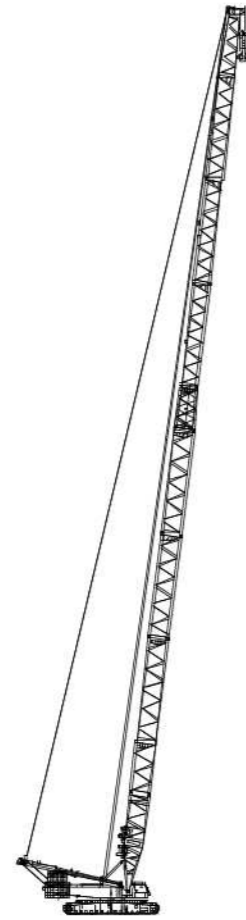
Description of Boom Assembly

Descriptions of Boom Assembly Codes

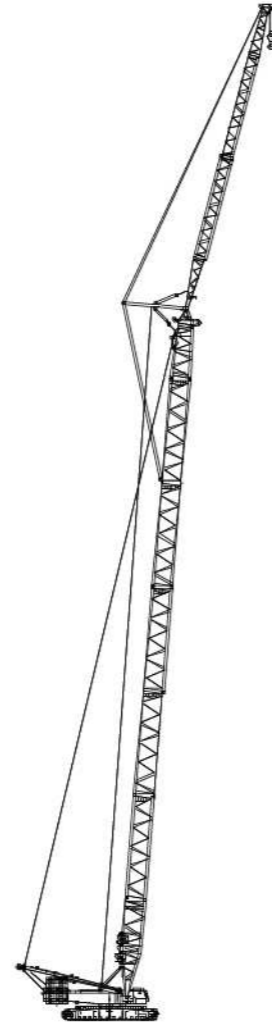
Code	Type	Operation mode parameters
S	Standard main boom	S=20m-83m
SL	Light duty boom	S=86m-92m
SF	Fixed jib	S=47m-71m F=13m-31m
SW	Luffing jib	S=38m-56m W=24m-51m



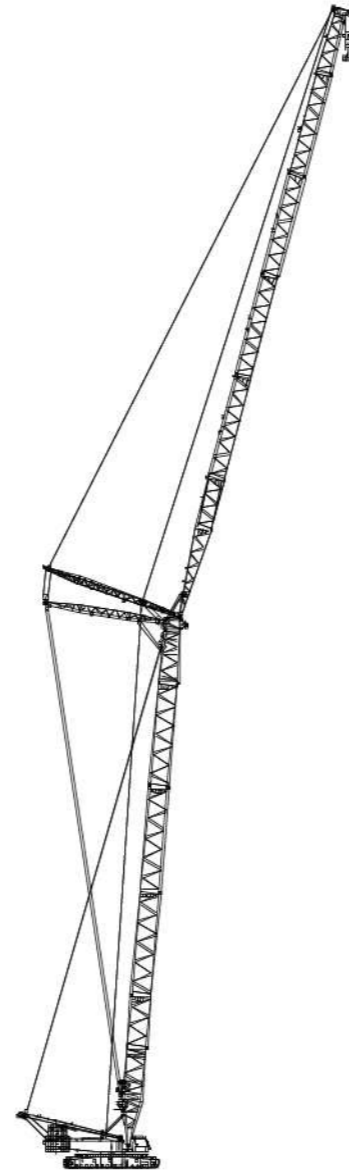
S



SL



SF



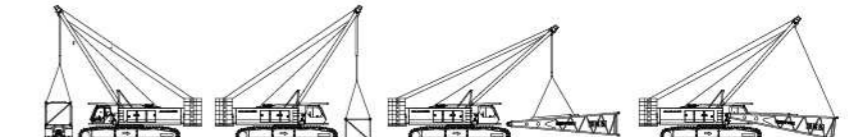
SW

Self-Assembly and Dismantling Functions

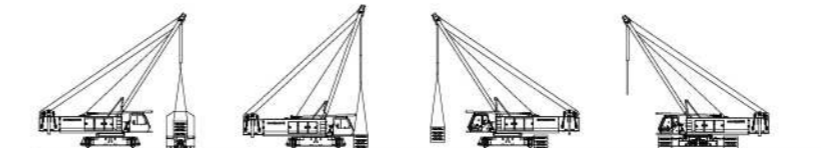
(Taking the self-assembly process of the crane operation with luffing jib as an example)



Unloading of basic machine



Unloading and assembling of boom



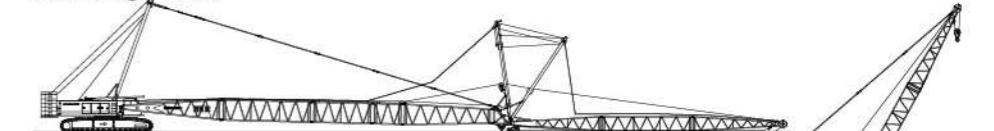
Unloading and assembling of crawler carrier



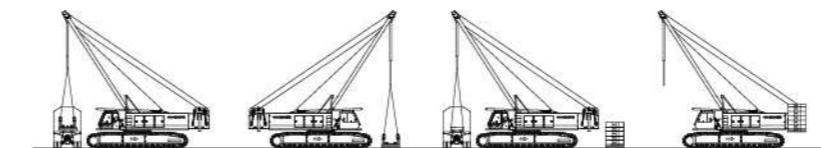
Assembling of boom



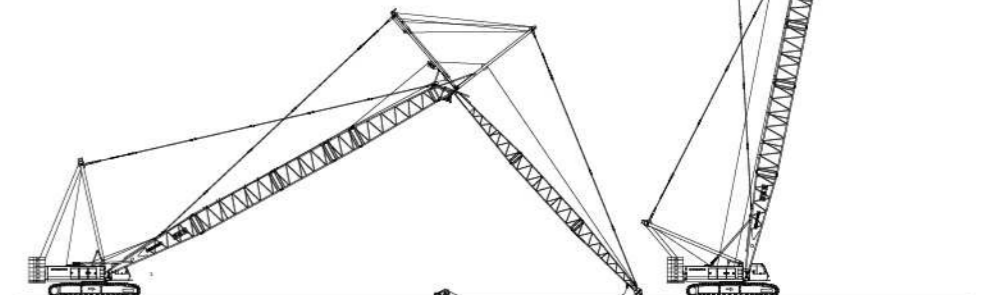
Unloading and assembling of central counterweight plate



Assembling of anchoring rods



Unloading and assembling of counterweight base plate and counterweight



Boom in erecting position

Boom in working position

Lifting Performance

Lifting Characteristics of Standard Main Boom (S Boom)

Standard Main Boom Lifting Height Characteristics Curve

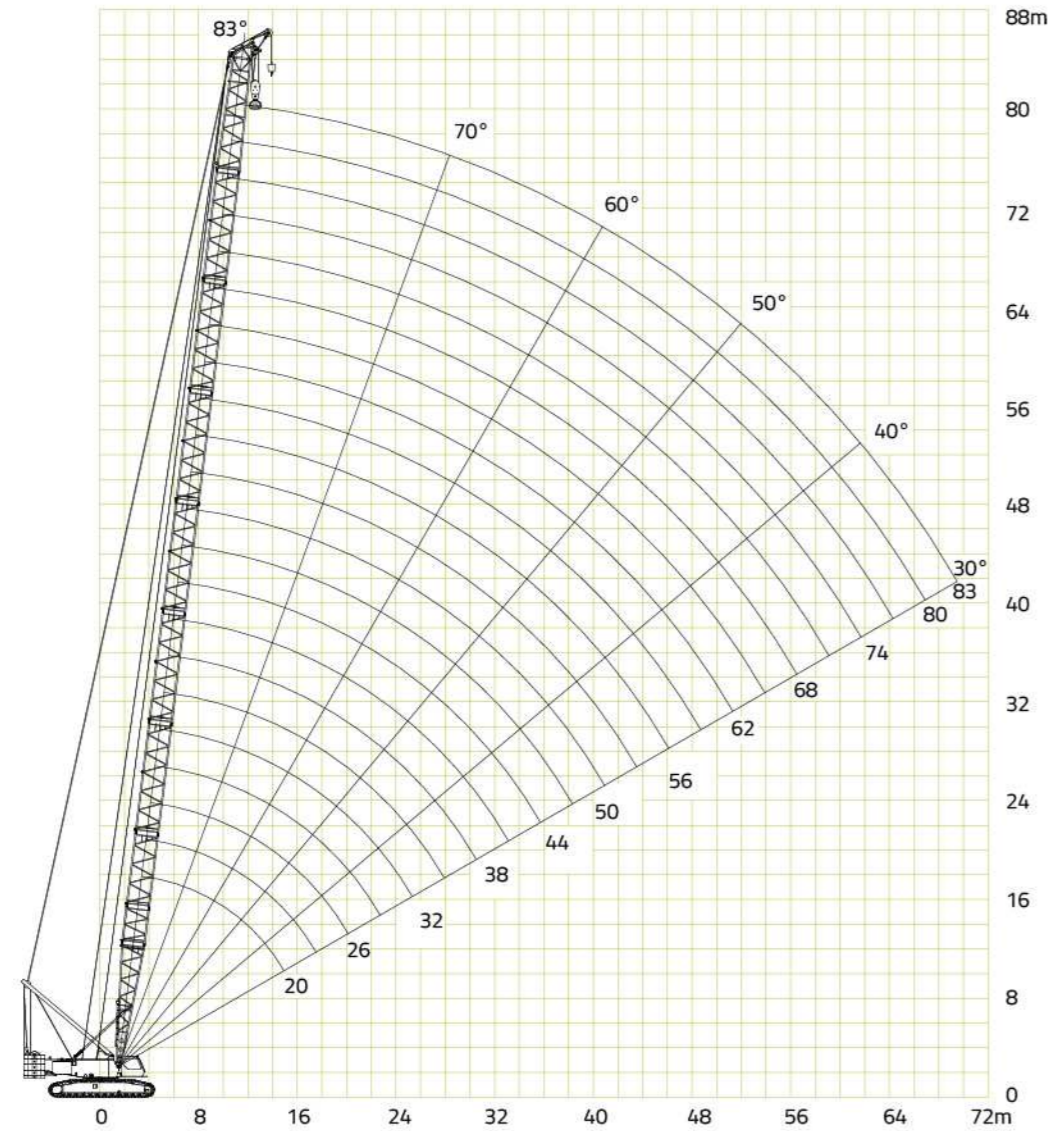


Table of Main Boom Lifting Performance (I) (S Boom)

Unit of measurement: t

Radius (m)	Boom length(m)										
	20	23	26	29	32	35	38	41	44	47	50
5	180.0										
6	161.0	143.0	134.6								
7	146.0	141.0	132.8	130.8	122.0						
8	132.8	130.8	129.8	125.8	120.8	110.5	99.0				
9	114.8	114.8	111.8	108.8	105.8	102.8	98.7	90.3	87.3		
10	98.2	98.2	98.2	96.1	93.5	91.2	88.8	87.5	84.3	75.7	74.0
11	85.3	85.3	85.3	85.3	83.5	81.7	79.7	77.8	75.9	74.3	72.5
12	75.3	75.3	75.3	75.3	75.3	73.9	72.2	71.6	69.0	67.6	66.1
13	67.3	67.3	67.3	67.3	67.3	67.3	66.0	64.5	63.1	61.9	60.6
14	60.7	60.7	60.7	60.7	60.7	60.7	60.6	60.4	58.1	57.1	55.9
15	52.7	52.7	52.7	52.7	52.7	52.7	52.7	54.9	53.8	52.9	51.8
16	50.8	50.8	50.8	50.8	50.8	50.8	50.8	50.7	50.0	49.2	48.2
17	46.8	46.8	46.8	46.8	46.8	46.8	46.8	46.8	46.6	46.0	45.1
18	43.6	43.6	43.6	43.6	43.6	43.6	42.2	43.3	43.1	43.1	42.2
19		40.5	40.5	40.5	40.5	40.5	40.4	40.3	40.2	40.1	39.7
20		37.9	37.9	37.9	37.8	37.8	37.8	37.6	37.5	37.4	37.3
22			33.4	33.4	33.3	33.3	33.3	33.1	33.0	32.9	32.8
24			30.8	29.8	29.7	29.7	29.6	29.5	29.3	29.3	29.1
26				26.6	26.6	26.6	26.6	26.5	26.3	26.3	26.1
28					24.1	24.1	24.1	24.0	23.8	23.8	23.6
30					23.4	22.1	21.9	21.8	21.6	21.6	21.4
32						20.9	20.0	19.9	19.8	19.7	19.6
34							18.9	18.3	18.1	18.1	17.9
36								16.8	16.7	16.7	16.5
38									16.3	15.4	15.2
40										14.3	14.1
42											13.1
44											12.1

Table of Main Boom Lifting Performance (II) (S Boom)

Unit of measurement: t

Radius (m)	Boom length(m)										
	53	56	59	62	65	68	71	74	77	80	83
11	63.8	63.4									
12	63.8	63.2	61.8	51.7							
13	59.3	58.0	56.9	51.7	51.1						
14	54.7	53.6	52.6	51.5	49.8	45.8	41.7				
15	50.8	49.7	48.9	47.9	46.9	44.7	41.4	38.0	34.6		
16	47.3	46.3	45.5	44.6	43.8	42.9	40.1	36.6	33.9	31.4	27.1
17	44.2	43.3	42.6	41.8	40.9	40.1	39.4	35.7	33.2	30.6	25.1
18	41.5	40.6	40.0	39.2	38.4	37.7	37.0	34.7	32.3	29.7	23.9
19	39.0	38.2	37.6	36.9	36.2	35.4	34.8	33.4	31.4	28.9	23.8
20	36.8	36.0	35.5	34.8	34.1	33.4	33.2	32.2	30.5	28.1	23.1
22	32.6	32.3	31.8	31.1	30.5	29.9	29.7	29.0	28.5	26.6	22.7
24	29.0	28.8	28.7	28.1	27.5	26.9	26.5	26.1	26.0	24.1	21.7
26	25.9	25.7	25.7	25.5	25.0	24.4	24.0	23.9	23.8	22.7	21.5
28	23.4	23.2	23.1	22.9	22.7	22.2	21.9	21.7	21.5	21.3	19.7
30	21.2	21.0	21.0	20.8	20.6	20.3	20.0	19.5	19.3	19.1	18.1
32	19.4	18.2	19.1	18.9	18.7	18.5	18.3	17.9	17.8	17.6	17.2
34	17.8	17.5	17.5	17.3	17.1	16.9	16.7	16.4	16.3	16.2	15.6
36	16.3	16.1	16.0	15.8	15.6	15.4	15.3	15.1	15.0	14.3	14.1
38	15.1	14.8	14.8	14.6	14.4	14.1	14.0	13.8	13.6	13.3	12.9
40	13.9	13.7	13.6	13.4	13.2	13.0	12.9	12.7	12.5	12.1	11.6
42	12.9	12.7	12.6	12.4	12.2	12.0	11.9	11.7	11.5	11.3	11.1
44	12.0	11.8	11.7	11.5	11.3	11.1	11.0	10.7	10.5	10.2	10.1
46	11.1	10.9	10.9	10.6	10.5	10.2	10.1	9.9	9.7	9.3	9.1
48	10.6	10.1	10.1	9.9	9.7	9.5	9.4	9.1	8.9	8.1	7.8
50		9.3	9.4	9.2	9.0	8.8	8.7	8.4	8.2	7.4	7.1
52			8.5	8.5	8.3	8.1	8.0	7.8	7.6	6.8	6.5
54				7.9	7.7	7.5	7.4	7.2	7.0	6.2	5.9
56					7.6	7.2	7.0	6.9	6.7	6.4	5.6
58						6.8	6.5	6.4	6.1	5.9	5.0
60							6.0	5.9	5.7	5.5	4.5
62								5.4	5.2	5.0	4.1
64									5.1	4.8	3.7
66										4.3	3.3
68											2.9
70											2.6
72											2.0

Lifting Characteristics of Light Duty Boom (S Boom)

Light Duty Boom Lifting Height Characteristics Curve

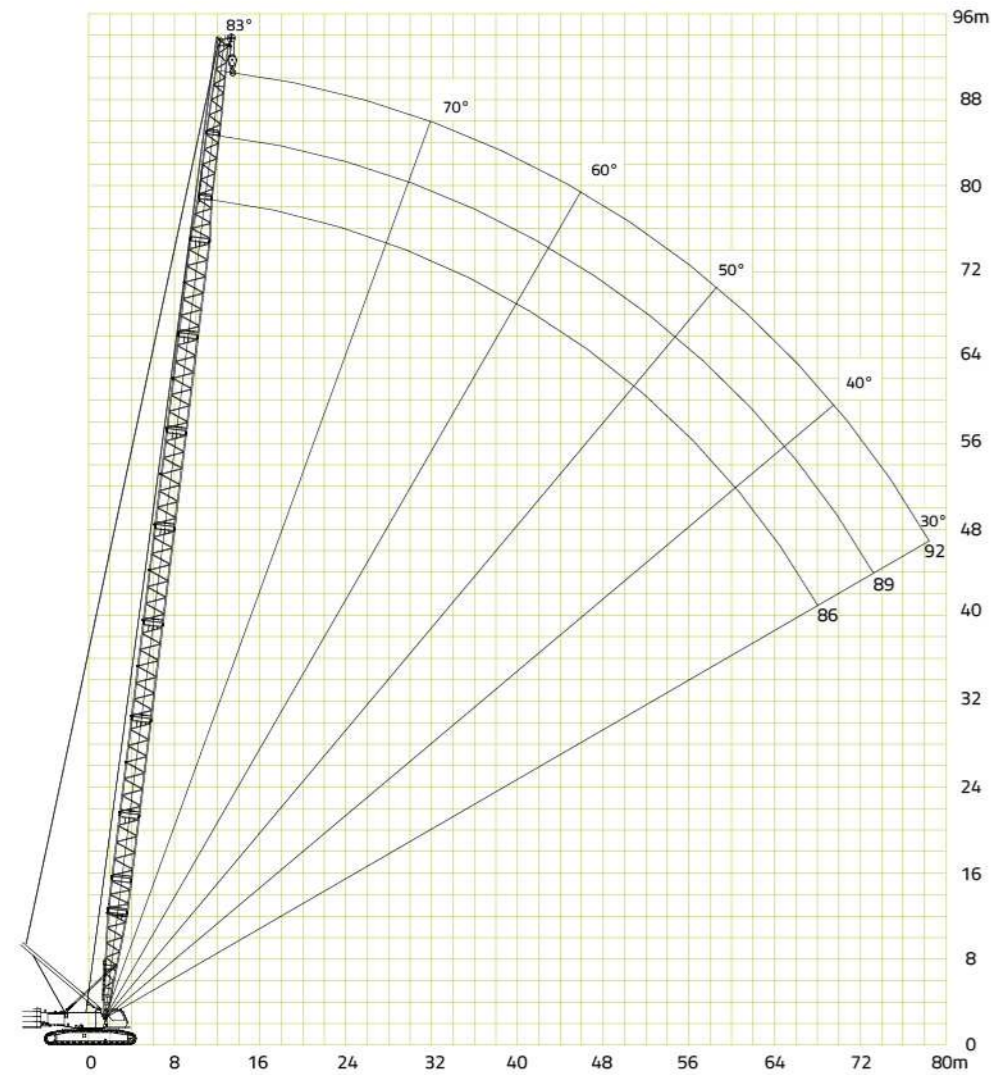


Table of Light Duty Boom Lifting Performance (SL Boom)

Unit of measurement: t

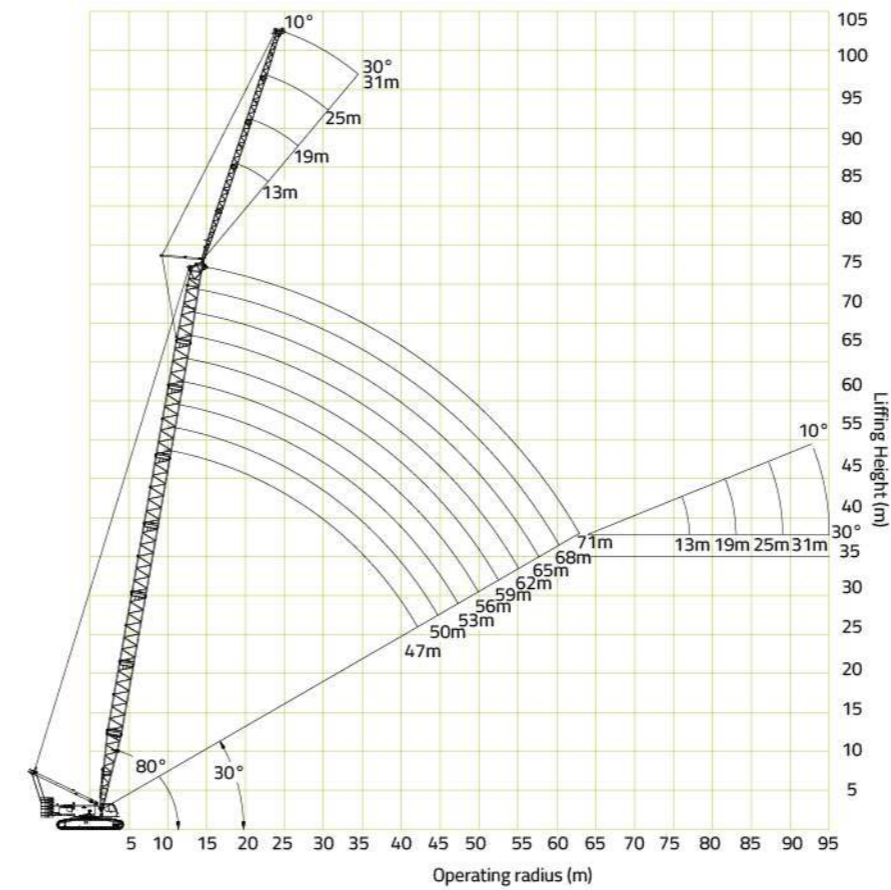
Radius (m)	Boom length(m)		
	86	89	92
18	19.5	17.7	15.6
20	19.4	16.8	14.8
22	18.1	16.0	14.1
24	17.6	15.5	13.4
26	17.0	15.0	12.9
28	16.4	14.3	12.5
30	15.0	13.7	11.9
32	13.8	13.2	11.5
34	12.6	12.1	10.7
36	11.6	11.1	10.2
38	10.6	10.2	9.4
40	9.7	9.5	8.7
42	9.0	8.8	8.0
44	8.3	8.1	7.4
46	7.6	7.5	6.8
48	7.0	6.8	6.2
50	6.4	6.2	5.7
52	5.9	5.7	5.2
54	5.5	5.3	4.7
56	5.0	4.8	4.3
58	4.6	4.4	3.9
60	4.2	4.0	
62	3.8	3.6	
64	3.5	3.3	
66	3.3		
68	2.9		

Notes:

1. The actual lifting capacity is equal to the rated lifting capacity values listed in the table minus the weights of all slings, including the lifting hook, etc
2. The rated lifting capacity as shown in the diagram is equal to the value of the load being lifted on a level, firm surface
3. During crane operation with gooseneck boom (auxiliary jib), the lifting capacity is equal to the lifting capacity of the main boom at the same radius, but must not exceed a maximum of 12 tons

Lifting Characteristics of Main Boom+Fixed Boom(SF Boom)

Fixed Jib Lifting Height Characteristics Curve



Notes:

1. The working radius is shown along horizontal axis, the lifting height is shown along the vertical axis, and unit of measurement is meter (unit: m)
2. The working length of the main boom during crane operations with fixed jib is 47~71m, and the working length of the fixed jib is 13~31m

Table of Fixed Boom Lifting Characteristics (I) (SF boom)

Unit of measurement: t

Length of main boom(m)	47							
	13		19		25		31	
Radius (m)	Jib set angle(°)							
	10	30	10	30	10	30	10	30
14	25							
16	24.5		20.7		11.7		8.0	
18	23.7		20.2		11.6		7.6	
20	22.7	19.8	19.7		11.5		7.4	
22	21.6	19.4	19.2	13.2	11.4		7.3	
24	20.5	18.7	18.8	13.1	11.2	7.8	7.1	
26	19.5	17.8	17.8	12.9	11.1	7.5	6.8	
28	18.6	17.1	16.9	12.7	11.0	7.3	6.4	
30	17.9	16.0	15.9	12.4	10.9	7.1	6.1	4.2
32	17.1	15.1	15	12.2	10.8	6.9	5.8	4.0
34	16.3	13.9	14.1	11.8	10.6	6.7	5.5	3.9
36	15.5	12.7	13.1	11.4	10.2	6.7	5.2	3.9
38	14.4	12.2	12.2	11.0	9.8	6.5	4.9	3.8
40	13.3	11.6	11.7	10.4	9.5	6.3	4.7	3.7
42	12.2	10.8	11.5	9.7	9.2	6.2	4.5	3.6
44	11.4	9.8	11.3	8.8	8.4	6.1	4.3	3.6
46	10.6	8.8	10.3	7.9	7.5	6.0	4.1	3.5
48	9.9	8.0	10.3	7.2	6.8	5.9	4.0	3.4
50	9.2	7.3	9.4	6.6	6.2	5.8	3.9	3.4
52	8.5	6.7	9.1	6.0	5.7	5.4	3.8	3.3
54	7.9	6.2	8.5	5.6	5.3	5.0	3.7	3.3
56			7.9	5.2	5.0	4.7	3.6	3.2
58			7.3	4.8	4.9	4.3	3.5	3.2
60			6.7	4.5	4.8	4.1	3.5	3.2
62					4.6	3.9	3.4	3.1
64					4.5	3.7	3.3	3.1
66					4.3		3.3	3.1
68					4.1		3.2	3.1
70							3.2	3.1
72							3.1	3.1
74							3.1	

Table of Fixed Boom Lifting Characteristics (II) (SF boom)

Unit of measurement: t

Length of main boom(m)	50							
	13		19		25		31	
	Jib set angle(°)							
Radius (m)	10	30	10	30	10	30	10	30
16	25							
18	23.7		20.7		11.6			
20	22.7	19.4	18.6		11.3		7.4	
22	21.6	19.0	17.8	13.7	11.2		7.3	
24	20.5	18.3	17	13.5	11.0	7.6	7.1	
26	19.5	17.5	16.2	13.3	10.9	7.4	6.8	
28	18.6	16.8	15.6	13.1	10.8	7.2	6.4	
30	17.9	15.7	15	12.8	10.7	7.0	6.1	4.2
32	17.1	14.8	14.3	12.6	10.6	6.8	5.8	4.0
34	16.3	13.6	14.1	12.2	10.4	6.6	5.5	3.9
36	15.5	12.4	13	11.8	10.0	6.5	5.2	3.9
38	14.4	12.0	12.3	11.4	9.6	6.3	4.9	3.8
40	13.3	11.4	11.5	10.8	9.3	6.1	4.7	3.7
42	12.2	10.6	10.8	9.5	9.0	6.1	4.5	3.6
44	11.4	9.6	9.3	8.5	8.2	6.0	4.3	3.6
46	10.6	8.6	9.8	7.7	7.4	5.9	4.1	3.5
48	9.9	7.8	9.2	7.0	6.7	5.8	4.0	3.4
50	9.2	7.2	8.8	6.4	6.1	5.7	3.9	3.4
52	8.5	6.6	8.4	5.8	5.7	5.3	3.8	3.3
54	7.9	6.1	8	5.4	5.5	4.9	3.7	3.3
56	7.2		7.7	5.1	5.4	4.6	3.6	3.2
58			7.2	4.9	5.2	4.2	3.5	3.2
60			6.6	4.7	5	4.0	3.5	3.2
62			6.2	4.5	4.8	3.8	3.4	3.1
64					4.7	3.6	3.3	3.1
66					4.6	3.5	3.3	3.1
68					4.4	3.4	3.2	3.1
70					3.3		3.2	3.1
72							3.1	3.1
74							3.1	
76							3.0	

Table of Fixed Boom Lifting Characteristics (III) (SF boom)

Unit of measurement: t

Length of main boom(m)	53							
	13		19		25		31	
	Jib set angle(°)							
Radius (m)	10	30	10	30	10	30	10	30
16	24.5							
18	23.7		20.7					
20	22.7	19.0	19.9		11.4		7.3	
22	21.6	18.6	19.5	13.4	10.9		7.2	
24	20.5	18.0	19.1	13.2	10.8		7.0	
26	19.5	17.1	18.8	13.0	10.7	7.2	6.7	
28	18.6	16.4	17.8	12.9	10.6	7.0	6.3	3.7
30	17.9	15.4	16.9	12.6	10.5	6.8	6.0	3.6
32	17.1	14.5	15.9	12.3	10.4	6.7	5.7	3.5
34	16.7	13.3	15	12.0	10.2	6.5	5.4	3.4
36	16	12.2	14.1	11.6	9.8	6.4	5.1	3.3
38	14.5	11.7	13.1	11.1	9.4	6.2	4.8	3.2
40	13.2	11.1	12.7	10.0	9.1	6.0	4.6	3.2
42	12.1	10.4	12.2	9.0	8.8	5.9	4.4	3.1
44	11.2	9.4	11.5	8.3	8.0	5.8	4.2	3.1
46	10.4	8.5	10.7	7.5	7.2	5.7	4.0	3.1
48	9.7	7.7	9.9	6.9	6.6	5.7	3.9	3.0
50	9	7.0	9.3	6.2	6.0	5.6	3.8	3.0
52	8.4	6.4	8.6	5.8	5.8	5.2	3.7	2.9
54	7.7	6.0	8	5.3	5.6	4.8	3.6	2.8
56	7.1	5.6	7.6	5.1	5.3	4.5	3.5	2.8
58	6.6	5.1	7	4.8	5.1	4.1	3.4	2.8
60	6		6.5	4.6	5	3.9	3.4	2.7
62			6	4.4	4.8	3.7	3.3	2.7
64			5.6		4.7	3.6	3.2	2.7
66					4.6	3.4	3.2	2.6
68					4.5	3.3	3.1	2.6
70							3.1	2.6
72							3.0	2.6
74							3.0	2.6
76							2.9	2.6

Table of Fixed Boom Lifting Characteristics (IV) (SF boom)

Unit of measurement: t

Length of main boom(m)	56							
	13		19		25		31	
	Jib set angle(°)							
Radius (m)	10	30	10	30	10	30	10	30
16	25							
18	24.4		20.7					
20	23.2	18.6	19.5		11.5		7.1	
22	22.3	18.2	18.5	13.1	10.7		7.0	
24	21.4	17.6	17.6	13.0	10.5		6.8	
26	20.4	16.8	17	12.8	10.4	7.1	6.5	
28	19.5	16.1	16.1	12.6	10.4	6.9	6.1	
30	18.6	15.1	15.5	12.3	10.3	6.7	5.9	3.5
32	17.9	14.2	14.8	12.1	10.2	6.5	5.6	3.4
34	17	13.0	14.5	11.7	10.0	6.3	5.3	3.3
36	15.8	11.9	13.6	11.4	9.6	6.3	5.0	3.2
38	14.5	11.3	13.2	10.9	9.2	6.1	4.7	3.1
40	13	10.8	12.5	9.8	8.9	5.9	4.5	3.1
42	12.1	10.2	11.7	9.0	8.7	5.8	4.3	3.0
44	11	9.2	11.2	8.1	7.9	5.7	4.1	3.0
46	10.1	7.5	10.5	7.4	7.1	5.6	3.9	3.0
48	9.4	6.9	9.8	6.9	6.4	5.5	3.8	2.9
50	8.7	6.2	9.1	6.2	6.2	5.5	3.7	2.9
52	8.1	5.7	8.4	5.6	5.9	5.1	3.6	2.8
54	7.6	5.3	7.8	5.2	5.8	4.7	3.6	2.7
56	7	5.2	7.3	5.0	5.5	4.4	3.5	2.7
58	6.4	5.0	6.9	4.7	5.4	4.1	3.4	2.7
60	5.8	4.6	6.4	4.5	5.3	3.8	3.4	2.6
62	5.4	4.3	5.5	4.3	5.2	3.7	3.3	2.6
64			5.3	3.9	5.1	3.5	3.2	2.6
66			5	3.6	5	3.4	3.2	2.5
68			4.6	3.3	4.9	3.3	3.1	2.5
70					4.6	3.2	3.1	2.5
72					4.1	3.1	3.0	2.5
74					3.8	3.0	3.0	2.5
76							2.9	2.5
78							2.8	2.6

Table of Fixed Boom Lifting Characteristics (V) (SF boom)

Unit of measurement: t

Length of main boom(m)	59							
	13		19		25		31	
	Jib set angle(°)							
Radius (m)	10	30	10	30	10	30	10	30
16	25							
18	24.4		20.7					
20	23.4	18.3	19.5		11.5		7.0	
22	22.5	17.8	18.5		10.7		6.9	
24	21.4	17.3	17.6	12.7	10.5		6.8	
26	20.4	16.4	17	12.5	10.4	6.9	6.5	
28	19.6	15.8	16.1	12.4	10.4	6.7	6.1	
30	18.8	14.8	15.5	12.1	10.3	6.6	5.8	3.5
32	17.9	13.9	14.8	11.8	10.2	6.4	5.5	3.4
34	17	12.8	14.5	11.5	10.0	6.2	5.2	3.3
36	15.5	11.7	13.6	11.1	9.6	6.1	4.9	3.2
38	14.1	10.7	13.2	10.7	9.2	6.0	4.7	3.1
40	12.9	9.8	12.5	9.6	8.9	5.9	4.5	3.1
42	11.7	9.0	11.7	8.8	8.7	5.7	4.3	3.0
44	11	8.1	11.2	8.0	7.9	5.6	4.1	3.0
46	10.1	7.3	10.5	7.2	7.1	5.5	3.9	3.0
48	9.4	6.6	9.8	6.6	6.4	5.4	3.8	2.9
50	8.7	6.2	9.1	6.2	6.2	5.3	3.7	2.9
52	7.9	5.8	8.4	5.7	5.9	5.0	3.6	2.8
54	7.3	5.5	7.8	5.4	5.8	4.6	3.5	2.7
56	6.7	5.1	7.3	5.1	5.5	4.3	3.4	2.7
58	6.3	4.9	6.3	4.6	5.4	4.0	3.3	2.7
60	5.8	4.6	5.7	4.4	5.3	3.7	3.3	2.6
62	5.3	4.3	5.3	4.2	5.2	3.6	3.2	2.6
64	4.9	4.1	4.9	4.1	5.1	3.4	3.1	2.6
66			4.7	3.8	4.9	3.3	3.1	2.5
68			4.3	3.4	4.5	3.2	3.0	2.5
70			3.9	3.2	4.4	3.1	3.0	2.5
72					4.1	3.0	2.9	2.5
74					3.8	2.9	2.9	2.5
76					3.3	2.8	2.9	2.5
78							2.6	2.5

Table of Fixed Boom Lifting Characteristics (VI) (SF boom)

Unit of measurement: t

Length of main boom(m)	62							
	13		19		25		31	
	Jib set angle(°)							
Radius (m)	10	30	10	30	10	30	10	30
16	25							
18	24.6		20.7					
20	23.7	18.1	19.5		11.5		7.0	
22	22.9	17.7	18.5	12.8	10.7		6.9	
24	21.8	17.1	17.6	12.6	10.5		6.7	
26	20.9	16.3	17	12.4	10.4	6.9	6.4	
28	20.1	15.6	16.1	12.2	10.4	6.7	6.0	
30	19	14.6	15.5	12.0	10.3	6.5	5.7	3.5
32	18.2	13.8	14.8	11.7	10.2	6.3	5.5	3.4
34	17	12.7	14.5	11.4	10.0	6.2	5.2	3.3
36	15.3	11.6	13.6	11.0	9.6	6.1	4.9	3.2
38	13.7	10.6	13.2	10.5	9.2	6.0	4.6	3.1
40	12.6	9.7	12.5	9.6	8.9	5.9	4.4	3.1
42	11.4	8.9	11.7	8.8	8.7	5.8	4.2	3.0
44	10.5	8.1	11.2	8.0	7.9	5.7	4.0	3.0
46	9.7	7.3	10.5	7.3	7.1	5.6	3.9	3.0
48	9	6.7	9.8	6.7	6.4	5.4	3.8	2.9
50	8.2	6.2	9.1	6.2	6.2	5.3	3.7	2.9
52	7.6	5.8	8.4	5.8	5.9	5.2	3.6	2.8
54	6.9	5.4	7.8	5.4	5.8	5.1	3.5	2.7
56	6.4	5.0	7.3	5.0	5.5	4.3	3.4	2.7
58	5.9	4.8	6.3	4.6	5.4	3.9	3.3	2.7
60	5.4	4.6	5.7	4.3	5.3	3.7	3.3	2.6
62	4.9	4.3	5.3	4.2	5.2	3.6	3.2	2.6
64	4.5	4.1	4.9	4.1	5.1	3.4	3.1	2.6
66	4	3.9	4.7	3.8	4.7	3.3	3.1	2.5
68			4.3	3.3	4.3	3.2	3.0	2.5
70			3.9	3.0	4	3.1	3.0	2.5
72			3.3	2.9	3.7	3.0	2.9	2.5
74					3.4	2.9	2.9	2.5
76					3.1	2.8	2.8	2.5
78					2.8		2.3	2.3
80							2.0	2.0

Table of Fixed Boom Lifting Characteristics (VII) (SF boom)

Unit of measurement: t

Length of main boom(m)	65							
	13		19		25		31	
	Jib set angle(°)							
Radius (m)	10	30	10	30	10	30	10	30
18	25							
20	23.7		20.5		11.5		6.9	
22	22.9	17.5	18.5		11.1		6.8	
24	21.8	16.9	18.1	12.5	10.9		6.6	
26	20.9	16.1	17.3	12.3	10.6	6.8	6.3	
28	20.1	15.5	16.5	12.1	10.4	6.6	6.0	
30	19	14.5	16.1	11.9	9.9	6.4	5.7	3.4
32	18.2	13.7	15.2	11.6	9.5	6.3	5.4	3.3
34	17	12.5	14.5	11.3	9.1	6.1	5.1	3.2
36	15.3	11.5	14.1	10.9	8.7	6.0	4.8	3.1
38	13.7	10.5	13.4	10.5	8.5	6.0	4.6	3.0
40	12.3	9.6	12.7	9.5	8.1	6.0	4.4	3.0
42	11.2	8.8	11.7	8.7	7.7	5.9	4.2	3.0
44	10.3	8.0	10.7	7.8	7.5	5.7	4.0	3.0
46	9.4	7.2	9.8	7.0	7.1	5.6	3.8	2.9
48	8.7	6.5	9.1	6.4	6.7	5.4	3.7	2.9
50	8	5.9	8.4	6.2	6.4	5.3	3.6	2.9
52	7.3	5.7	7.6	5.6	6.1	5.1	3.5	2.8
54	6.7	5.4	7	5.3	5.8	5.0	3.4	2.8
56	6.1	5.0	6.5	5.0	5.5	4.5	3.4	2.7
58	5.7	4.8	5.8	4.6	5.4	3.9	3.3	2.7
60	5.2	4.6	5.4	4.3	5.3	3.7	3.3	2.6
62	4.8	4.3	4.9	4.1	5.2	3.5	3.2	2.6
64	4.3	4.1	4.7	4.1	5.1	3.3	3.1	2.6
66	3.9	3.9	4.3	3.6	4.4	3.2	3.1	2.5
68	3.3	3.6	3.9	3.3	4.2	3.1	3.0	2.5
70			3.6	3.0	3.9	3.0	3.0	2.5
72			3.2	2.9	3.5	2.9	2.9	2.5
74			3	2.8	3.2	2.8	2.8	2.5
76			2.7		3		2.6	2.5
78					2.6		2.4	2.3
80							2.1	2.0

Table of Fixed Boom Lifting Characteristics (VIII) (SF boom)

Unit of measurement: t

Length of main boom(m)	68							
	13		19		25		31	
	Jib set angle(°)							
Radius (m)	10	30	10	30	10	30	10	30
18	25							
20	24.1	17.5	20.5					
22	22.9	17.3	18.9		11.4			
24	22.1	16.8	18.5	12.3	11.4			
26	21.3	15.9	18.1	12.2	10.6	6.7	6.3	
28	20.3	15.3	16.5	12.0	10.4	6.5	5.9	
30	19.6	14.3	16.1	11.7	9.9	6.4	5.6	3.5
32	17.9	13.5	15.6	11.5	9.5	6.2	5.4	3.4
34	16.6	12.4	15	11.1	9.1	6.0	5.1	3.3
36	15.2	11.4	14.9	10.8	8.7	6.0	4.8	3.2
38	13.9	10.4	13.5	10.4	8.5	6.0	4.5	3.1
40	12.3	9.5	12.6	9.3	8.1	6.0	4.3	3.0
42	11.2	8.7	11.7	8.6	7.7	5.9	4.2	3.0
44	10.2	7.9	10.6	7.6	7.5	5.7	4.0	3.0
46	9.3	7.1	9.6	7.0	7.1	5.6	3.8	3.0
48	8.5	6.4	8.8	6.4	6.7	5.4	3.7	3.0
50	7.9	5.9	7.9	5.9	6.4	5.3	3.6	2.9
52	7.2	5.6	7.1	5.5	6.1	5.1	3.5	2.8
54	6.6	5.3	6.6	5.3	5.8	5.0	3.4	2.8
56	6	4.9	6.1	4.9	5.5	4.5	3.3	2.7
58	5.6	4.6	5.6	4.5	5.4	4.1	3.2	2.6
60	5.1	4.5	5	4.3	5.3	3.6	3.2	2.6
62	4.6	4.4	4.6	4.1	5.2	3.5	3.1	2.5
64	4.3	4.1	4.3	3.6	5.1	3.3	3.0	2.5
66	3.9	3.9	3.9	3.3	4.4	3.2	3.0	2.5
68	3.4	3.7	3.5	2.9	4.2	2.9	2.9	2.4
70	3.2	3.4	3.3	2.6	3.8	2.6	2.6	2.4
72	2.9	3.1	3.1	2.3	3.5	2.3	2.3	2.3
74			3	2.0	3.1	2.0	2.2	2.0
76					2.8		2.1	
78					2.6		2	
80							1.9	

Table of Fixed Boom Lifting Characteristics (IX) (SF boom)

Unit of measurement: t

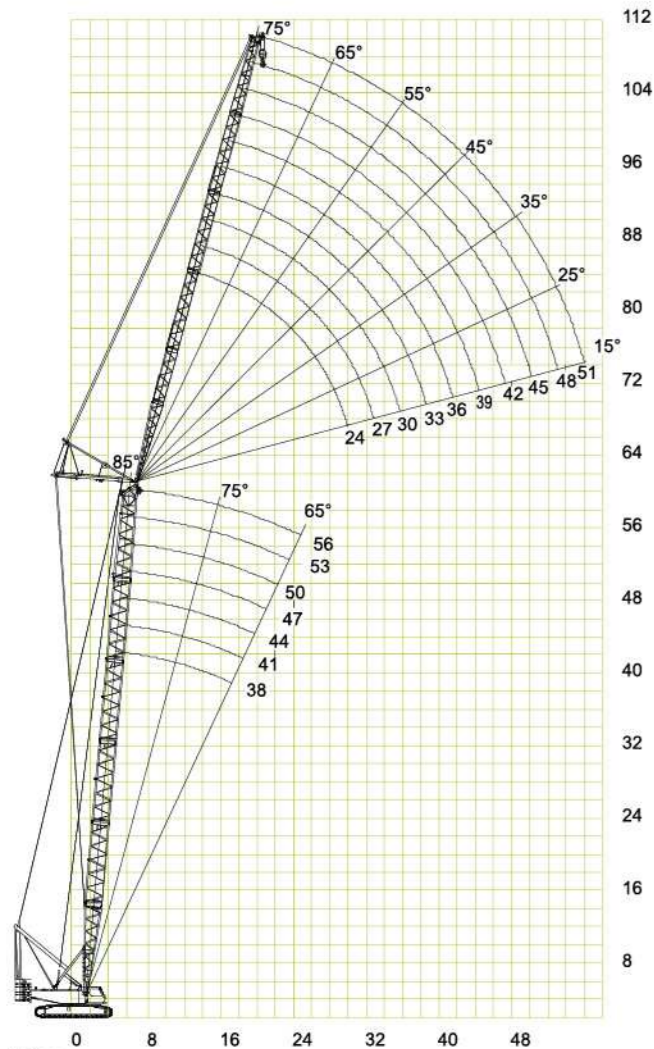
Length of main boom(m)	71							
	13		19		25		31	
	Jib set angle(°)							
Radius (m)	10	30	10	30	10	30	10	30
18	25							
20	24.1		20.5					
22	23.5	17.0	19.1		11.4			
24	22.8	16.4	18.5	12.2	11.4			
26	22	15.6	18.1	12.0	10.6	6.6	6.2	
28	20.9	15.0	16.5	11.9	10.4	6.5	5.8	
30	19.6	14.1	16.1	11.6	9.9	6.3	5.6	
32	17.9	13.3	15.6	11.4	9.5	6.1	5.3	3.3
34	16.2	12.2	15	11.0	9.1	6.0	5.0	3.2
36	14.7	11.1	14.9	10.7	8.7	6.0	4.7	3.1
38	13.6	10.2	13.5	10.3	8.5	6.0	4.5	3.0
40	12.3	9.4	12.6	9.0	8.1	6.0	4.3	3.0
42	11.2	8.6	11.7	8.1	7.7	6.0	4.1	3.0
44	10.2	7.8	10.6	7.5	7.5	5.8	4.0	3.0
46	9.3	7.0	9.6	6.9	7.1	5.6	3.9	3.0
48	8.5	6.4	8.8	6.4	6.7	5.4	3.8	3.0
50	7.9	5.9	7.9	5.9	6.4	5.2	3.7	2.9
52	7.2	5.6	7.1	5.6	6.1	5.0	3.6	2.8
54	6.6	5.2	6.6	5.2	5.8	4.8	3.4	2.8
56	6	4.8	6.1	4.7	5.5	4.4	3.3	2.7
58	5.6	4.5	5.6	4.4	5.4	4.0	3.2	2.6
60	5.1	4.4	5	4.2	5.3	3.6	3.2	2.5
62	4.4	4.3	4.6	3.8	5.1	3.4	3.1	2.5
64	4.1	4.0	4.3	3.4	4.7	3.3	3.0	2.5
66	3.6	3.8	3.9	3.0	4.3	3.2	3.0	2.4
68	3.2	3.5	3.5	2.7	4.1	2.9	2.9	2.4
70	3.1	3.2	3.3	2.4	3.7	2.6	2.6	2.3
72	2.6	2.9	3.1	2.3	3.3	2.3	2.3	2.3
74	2.5	2.6	3	2.0	2.9	2.0	2.1	2.0
76			2.3		2.5		2	
78			2		2.3		1.9	
80							1.8	

Notes:

1. The actual lifting capacity is equal to the rated lifting capacity values listed in the table minus the weights of all slings, including the lifting hook, etc
2. The rated lifting capacity as shown in the diagram is equal to the value of the load being lifted on a level, firm surface
3. During crane operations with the fixed jib, simultaneous working of the main boom and fixed jib is prohibited

Lifting Characteristics of Main Boom + Luffing Jib (SW Boom)

Luffing Jib Lifting Height Curve



Notes:

1. The working radius is shown along horizontal axis, the lifting height is shown along the vertical axis, and unit of measurement is meter (unit: m)
2. The working length of the main boom during crane operations with luffing jib is 38-56m, and the working length of the luffing jib is 24-51m

Table of Luffing Jib Lifting Performance (I) (SW Boom)

Unit of measurement: t

Length of main boom(m)	38											
	24			27			30			33		
Length of jib (m)	Working angle of boom (°)											
	85	75	65	85	75	65	85	75	65	85	75	65
12	38.3											
14	35.5			32.3			29.2					
16	30.5			28.9			27.5			24.9		
18	27.5			26.1			24.8			23.7		
20	25.0			23.7			21.2			20.3		
22	20.0			19.5			19.2			18.5		
24	17.8	23.2		17.5	22.8		17.1			16.9		
26	16.1	21.3		15.7	20.9		15.5	20.8		15.2		
28	14.5	19.6		14.2	18.7		13.9	18.3		13.7	17.5	
30		16.9		13.0	16.6		12.7	16.3		12.5	16.0	
32		15.3	16/33		14.9		11.6	14.7		11.5	14.4	
34		13.8	15		13.5	14.6	9.0	13.3		8.8	13.0	
36			14.5		12.3	13.6		12.1	13.4	8.3	11.8	
38			14		12.8		11.0	12.6		10.8	12.4	
40			13		12.0		8.4	11.8		8.3	11.8	
42					11.3			11.2		7.8	11.2	
44					10.7			10.7			10.5	
46								8.6			8.4	
48											7.8	

Table of Luffing Jib Lifting Performance (II) (SW Boom)

Unit of measurement: t

Length of main boom(m)	38											
	36			39			42			45		
Length of jib (m)	Working angle of boom (°)											
	85	75	65	85	75	65	85	75	65	85	75	65
16	21.3			18.9								
18	20.6			18.4			16.3			14.0		
20	19.4			17.6			15.7			13.6		
22	17.6			17.0			15.2			13.3		
24	16.3			15.5			14.6			12.9		
26	14.9			14.2			13.5			12.5		
28	13.5	16.7		13.2			12.5			11.9		
30	12.4	15.3		12.1	14.7		11.5	13.6		9.6		
32	9.4	14.1		9.2	13.4		9.1	12.8		9.0	11.6	
34	8.6	12.8		8.5	12.3		8.5	11.8		8.3	11.2	
36	8.1	11.7		7.9	11.4		7.7	10.8		7.6	9.1	
38	7.5	10.6		7.4	10.4		7.2	8.6		7.0	8.4	
40		8.2	11.7	6.8	8.1		6.6	7.9		6.5	7.8	
42		7.6	11.0	6.3	7.4	9.3	6.3	7.3		6.1	7.2	
44		7.1	10.3		6.9	9.3	5.9	6.8	8.7	5.7	6.6	
46		6.6	8.3		6.4	8.1		6.3	8.0	5.5	6.1	7.9
48			7.7		5.9	7.6		5.8	7.4	5.1	5.7	7.3
50			7.1			7.0		5.4	6.8		5.3	6.8
52			6.6			6.5		5.3	6.4		5.1	6.3
54						6.1			5.9		4.8	5.8
56									5.6			5.4
58									5.3			5.2
60												4.8

Table of Luffing Jib Lifting Performance (III) (SW Boom)

Unit of measurement: t

Length of main boom(m)	38					
	48			51		
Length of jib (m)	Working angle of boom (°)					
	85	75	65	85	75	65
18	10.1					
20	10.1		8.4			
22	9.7		8.2			
24	9.5		7.9			
26	9.4		7.7			
28	9.2		7.5			
30	9.0		7.4			
32	8.5		7.2			
34	7.8	8.4	7.0			7.0
36	7.2	8.3	6.7			6.8
38	6.6	8.0	6.1			6.7
40	6.1	7.3	5.7			6.4
42	5.7	6.8	5.5			6.3
44	5.5	6.3	5.1			5.8
46	5.1	5.8	4.7	7.4		5.4
48	4.7	5.3	4.4	6.8	5.1	6.3
50	4.5	5.0	4.2	6.3	4.8	5.9
52		4.8	3.8	5.8	4.4	5.4
54		4.5	3.6	5.4	4.2	5.2
56		4.2		5.2	3.8	4.8
58		4.0		4.8	3.7	4.5
60				4.5	3.3	4.2
62				4.3		3.9
64				4.0		3.7
66						3.4

Table of Luffing Jib Lifting Performance (IV) (SW Boom)

Unit of measurement: t

Length of main boom(m)	47											
	24			27			30			33		
Radius (m)	Working angle of main boom (°)											
	85	75	65	85	75	65	85	75	65	85	75	65
14	37.3			34.3								
16	31.8			30.2			28.5			25.3		
18	28.5			27.2			25.7			24.4		
20	25.9			24.6			23.4			20.9		
22	23.4			20.5			20.1			19.2		
24	18.6			18.3			17.9			17.5		
26	16.7	19.9		16.4	19.6		16.1			15.8		
28	15.1	18.5		14.8	18.2		14.5	18.0		14.3		
30		17.2		13.4	16.8		13.3	16.7		13.0	16.3	
32		16.0			15.8		12.1	15.6		11.8	15.4	
34		15.1			14.9		9.3	14.6		9.2	14.4	
36		13.9	12.6		13.7			13.4		8.5	13.2	
38			12.0		12.4	11.7		12.2			12.0	
40			11.3		11.3	11.0		11.2	10.8		11.0	
42			10.7			10.5		8.6	10.3		8.4	10.0
44			10.0			9.8			9.8		7.8	9.5
46						9.3			9.3			9.2
48									8.8			8.7
50										8.4		8.3
52												7.8
54												7.4/53

Table of Luffing Jib Lifting Performance (V) (SW Boom)

Unit of measurement: t

Length of main boom(m)	47												
	36			39			42			45			
Radius (m)	Working angle of main boom (°)												
	85	75	65	85	75	65	85	75	65	85	75	65	
16	22.5												
18	20.8					18.5			16.5			14.2	
20	20.1					17.9			15.9			13.8	
22	18.3					17.3			15.4			13.4	
24	16.8					16.1			14.8			13.1	
26	15.5					14.7			14.0			12.7	
28	14.0					13.5			12.9			12.2	
30	12.7	16.2				12.5			11.9			11.3	
32	11.6	15.1				11.5	14.8		9.4			9.2	
34	9.0	14.1				8.8	13.6		8.6	13.0		8.5	11.7
36	8.3	13.0				8.1	12.5		8.0	12.0		7.9	11.3
38	7.7	11.8				7.5	11.6		7.4	11.0		7.3	10.4
40	7.2	10.8				7.0	10.6		6.8	8.7		6.7	8.6
42		8.3				6.5	8.1		6.5	8.0		6.2	7.9
44		7.7	9.3			7.6			6.0	7.4		5.8	7.3
46		7.1	8.8			7.0	8.7		5.7	6.8		5.6	6.8
48		6.6	8.6			6.5	8.4		6.3	8.1		5.3	6.3
50			8.3			6.1	7.9		5.9	7.8		5.8	7.6
52			7.6			7.4			5.6	7.3		5.4	7.3
54			7.1			6.9			5.3	6.8		5.2	6.7
56			6.6			6.4			6.3			4.8	6.2
58						6.0			5.9				5.7
60									5.5				5.3
62									5.3				5.2
64													4.8

Table of Luffing Jib Lifting Performance (VI) (SW Boom)

Unit of measurement: t

Length of main boom(m)	47						
	48			51			
Radius (m)	Working angle of main boom (°)						
	85	75	65	85	75	65	
20	10.1				8.5		
22	9.8				8.3		
24	9.6				8.1		
26	9.5				7.8		
28	9.2				7.6		
30	9.0				7.5		
32	8.8				7.3		
34	8.1				7.1		
36	7.4	8.5			6.8		
38	6.8	8.3			6.4	6.8	
40	6.3	8.1			5.9	6.7	
42	5.8	7.4			5.6	6.5	
44	5.5	6.8			5.2	6.3	
46	5.3	6.3			4.9	5.9	
48	4.9	5.8			4.5	5.4	
50	4.5	5.4	7.4		4.2	5.2	
52	4.4	5.2	6.8		4.0	4.8	6.3
54		4.8	6.3		3.7	4.5	5.8
56		4.5	5.8			4.2	5.4
58		4.3	5.3			3.9	5.2
60		4.0	5.1			3.7	4.8
62			4.8			3.4	4.5
64			4.5				4.2
66			4.2				3.8
68			4.0				3.7
70							3.4

Table of Luffing Jib Lifting Performance (VII) (SW Boom)

Unit of measurement: t

Length of main boom(m)	56														
	24			27			30			33					
Radius (m)	Working angle of main boom (°)														
	85	75	65	85	75	65	85	75	65	85	75	65			
14	32.6														
16	30.0					29.8			28.9			25.7			
18	27.7					27.5			26.9			24.7			
20	25.7					25.5			24.4			23.2			
22	24.0					23.3			20.8			19.9			
24	19.5					19.1			18.7			18.2			
26	17.4					17.1			16.8			16.5			
28	15.7	17.5				15.4			15.1			14.8			
30		16.3				13.9	16.2		13.6	15.8		13.4			
32		15.3				12.7	15.1		12.5	14.9		12.3	14.6		
34		14.3					14.1		11.5	13.9		9.4	13.8		
36		13.4					13.3			13.1		8.7	12.9		
38		12.8					12.6			12.3		8.1	12.2		
40							10.2			12.0		11.7	11.5		
42							9.7			11.2		9.5	11.2		
44							9.2			9.0		8.7	8.8	8.6	
46							8.7			8.6		8.4		7.9	
48							8.3			8.1		7.9		7.3	8.3
50										7.8		7.6			7.9
52												7.1			7.4
54												6.8			6.9
56															6.6

Table of Luffing Jib Lifting Performance (VIII) (SW Boom)

Unit of measurement: t

Length of main boom(m)	56											
	36			39			42			45		
Radius (m)	Working angle of main boom (°)											
	85	75	65	85	75	65	85	75	65	85	75	65
18	21.2			18.8			16.7					
20	20.5			18.2			16.2			13.9		
22	19.0			17.5			15.5			13.5		
24	17.4			16.6			15.1			13.3		
26	16.0			15.2			14.5			12.9		
28	14.5			14.0			13.3			12.4		
30	13.3			12.9			12.3			11.6		
32	12.1			11.8			9.6			9.5		
34	9.2	13.4		9.1	13.3		8.9			8.8		
36	8.5	12.6		8.5	12.4		8.3	12.3		8.1	11.8	
38	7.9	12.0		7.7	11.8		7.6	11.7		7.5	11.3	
40	7.4	11.3		7.2	11.2		7.1	11.0		6.9	10.6	
42		10.7		6.7	10.5		6.6	8.7		6.5	8.7	
44		8.4		6.3	8.3		6.1	8.1		5.9	7.9	
46		7.8			7.6		5.8	7.5		5.6	7.3	
48		7.3	7.6		7.1			6.9		5.4	6.8	
50		6.8	7.3		6.6	6.9		6.4		5.1	6.3	
52			6.8		6.1	6.6		5.9	6.4		5.8	6.3
54			6.4		5.7	6.3		5.6	6.1		5.4	5.8
56			6.1			5.9		5.3	5.6		5.2	5.6
58			5.8			5.6			5.4		4.8	5.3
60			5.4			5.3			5.3			5.2
62						5.2			5.0			4.8
64									4.8			4.7
66									4.7			4.5
68												4.3

Table of Luffing Jib Lifting Performance (IX) (SW Boom)

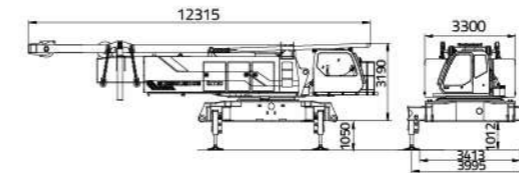
Unit of measurement: t

Length of main boom(m)	56					
	48			51		
Radius (m)	Working angle of main boom (°)					
	85	75	65	85	75	65
20	10.1					
22	10.1			8.4		
24	9.7			8.1		
26	9.5			7.9		
28	9.4			7.7		
30	9.1			7.5		
32	9.0			7.4		
34	8.3			7.2		
36	7.6			7.0		
38	7.0	8.5		6.6		
40	6.5	8.3		6.1	6.9	
42	6.0	8.2		5.7	6.8	
44	5.6	7.6		5.3	6.5	
46	5.3	6.9		5.0	6.3	
48	5.0	6.4		4.6	5.9	
50	4.7	5.8		4.4	5.5	
52	4.4	5.4		4.0	5.2	
54		5.2	5.6	3.8	4.8	
56		4.8	5.4		4.5	5.3
58		4.5	5.2		4.2	5.0
60		4.3	5.0		4.0	4.8
62		4.0	4.8		3.7	4.7
64			4.5		3.5	4.5
66			4.3			4.2
68			4.2			4.0
70			4.0			3.8
72			3.8			3.7
74						3.3

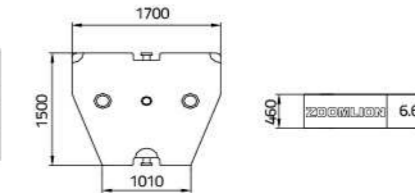
Notes:

1. The actual lifting capacity is equal to the rated lifting capacity values listed in the table minus the weights of all slings, including the lifting hook, etc
2. The rated lifting capacity as shown in the diagram is equal to the value of the load being lifted on a level, firm surface

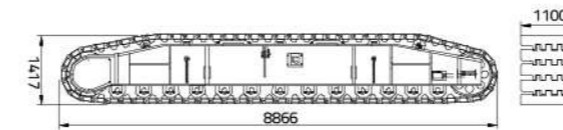
Transport Dimensions and Weight of Main Components



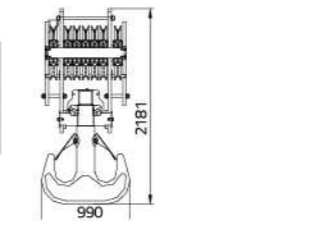
Name	Basic machine
Weight (t)	43.7
Quantity	1
Remarks	



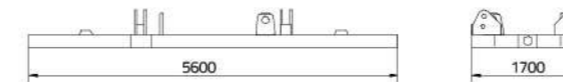
Name	Counterweight block
Weight (t)	6.6
Quantity	6
Remarks	



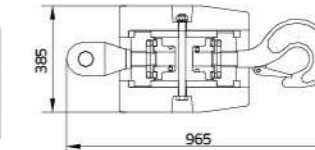
Name	Crawler carrier
Weight (t)	20.7
Quantity	2
Remarks	



Name	Main hook 160t load hook
Weight (t)	2.377
Quantity	1
Remarks	



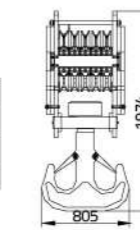
Name	Counterweight base plate
Weight (t)	13.75
Quantity	1
Remarks	



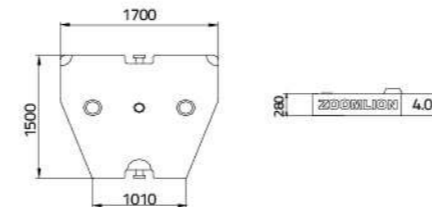
Name	Auxiliary hook 12t load hook
Weight (t)	0.461
Quantity	1
Remarks	



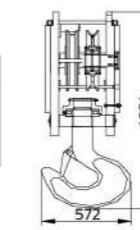
Name	Central counterweight plate
Weight (t)	10
Quantity	2
Remarks	



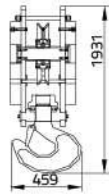
Name	Auxiliary hook 100t load hook
Weight (t)	1.93
Quantity	1
Remarks	



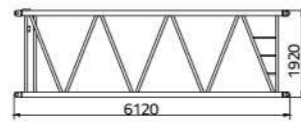
Name	Counterweight block
Weight (t)	4
Quantity	2
Remarks	



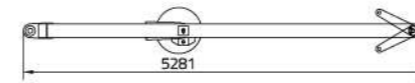
Name	Auxiliary hook 50t load hook
Weight (t)	1.358
Quantity	1
Remarks	



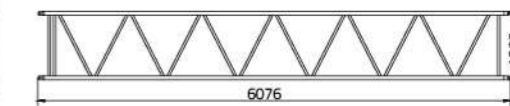
Name	Auxiliary hook 30t load hook
Weight (t)	1.085
Quantity	1
Remarks	



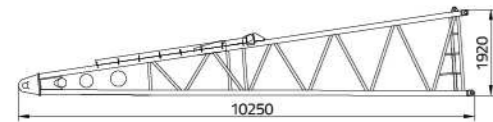
Name	6M main boom intermediate section
Weight (t)	0.891
Quantity	1
Remarks	Width 2114



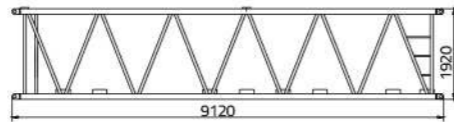
Name	Bracing pole of fixed jib
Weight (t)	0.473
Quantity	1
Remarks	Width 1457



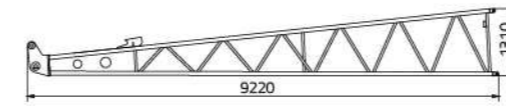
Name	9M luffing jib intermediate section
Weight (t)	0.55
Quantity	2
Remarks	Width 1306



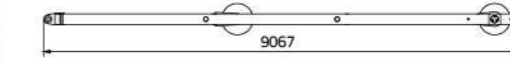
Name	Bottom section of main boom
Weight (t)	2.214
Quantity	1
Remarks	Width 2114



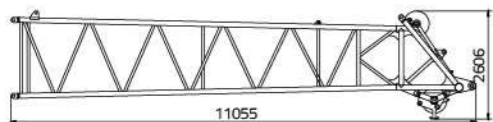
Name	9M main boom intermediate section
Weight (t)	1.323
Quantity	6
Remarks	Width 2114



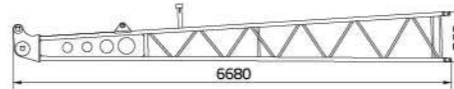
Name	Bottom section of luffing jib
Weight (t)	0.787
Quantity	1
Remarks	Width 1306



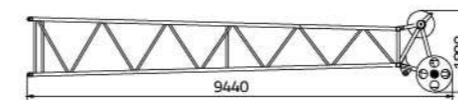
Name	Front bracing pole of luffing jib
Weight (t)	1.011
Quantity	1
Remarks	Width 1293



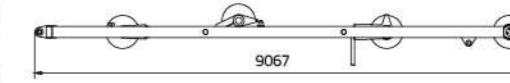
Name	Top section of main boom
Weight (t)	2.89
Quantity	1
Remarks	Width 2114



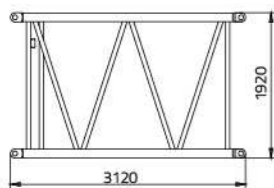
Name	Bottom section of fixed jib
Weight (t)	0.436
Quantity	1
Remarks	Width 1458



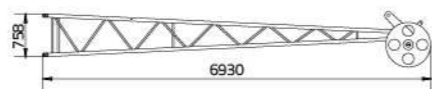
Name	Top section of luffing jib
Weight (t)	0.891
Quantity	1
Remarks	Width 1306



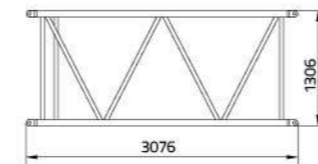
Name	Rear bracing pole of luffing jib
Weight (t)	1.222
Quantity	1
Remarks	Width 1631



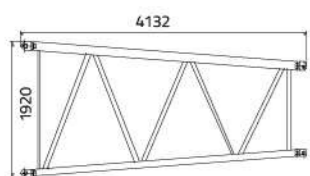
Name	3M main boom intermediate section
Weight (t)	0.538
Quantity	1
Remarks	Width 2114



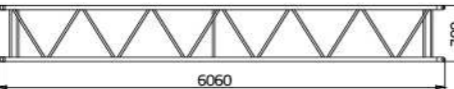
Name	Top section of fixed jib
Weight (t)	0.397
Quantity	1
Remarks	Width 960



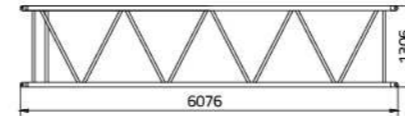
Name	3M luffing jib intermediate section
Weight (t)	0.212
Quantity	1
Remarks	Width 1306



Name	4M main boom transition section
Weight (t)	0.538
Quantity	1
Remarks	Width 1920



Name	6M fixed jib intermediate section
Weight (t)	0.232
Quantity	3
Remarks	Width 960



Name	6M luffing jib intermediate section
Weight (t)	0.381
Quantity	2
Remarks	Width 1306